




2 Br Apartment for Rent

Fully Furnished | Great City View | All Amenities

\$ 10,000 AED / MONTH

 Hartland Garden Apartments, Sobha Hartland, Mohammed Bin Rashid City, Dubai

FACTS

Status	Type	Bedroom	Bathroom
Available	for Rent	2 Bedrooms	2 Bathrooms
Size	parkings	Cheques	Furnished
1,175 Sqft	1	2	Furnished

- Ref: stage-my-estate-vacation-homes-rental-l-l-c-7
- DTCM: AL-SOB-YOEIK

DESCRIPTION

We introduces this luxurious two-bedroom apartment for rent, strategically positioned in close proximity to Burj Khalifa and Dubai Mall. Revel in opulent living within the heart of Dubai's iconic skyline, with seamless access to these world-renowned landmarks.

Luxurious Apartment Highlights:

Expansive two-bedroom layout

Elegant and contemporary bathrooms

Chiller-free

Spacious interior spanning [insert square footage]

Captivating views of the cityscape

Sophisticated living area

Lavish built-in wardrobes for added convenience

Building Amenities and Facilities:

Cutting-edge gymnasium with state-of-the-art equipment

Inviting swimming pool for relaxation

Exclusive health club facilities for residents

Chic on-site cafe and restaurant

Secure garage parking for residents

Dedicated kids play area

Fully equipped kitchen and with a smart TV

We are dedicated to ensuring a luxurious and enjoyable real estate experience. Our vision is to be a premier real estate brokerage in the U. A. E. , offering top-tier professional services with an emphasis on efficient delivery and execution. We aspire to cultivate trust and loyalty among both current and future clients.

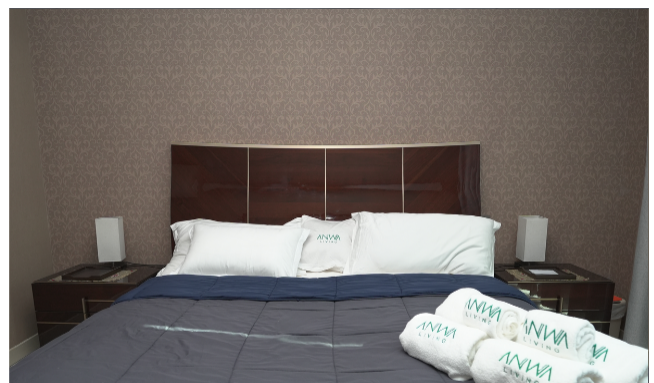
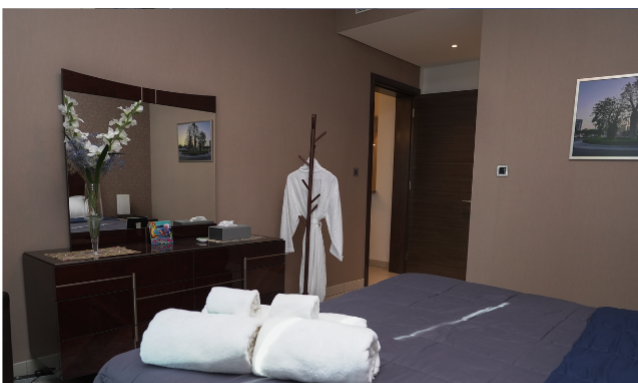
For viewings and detailed information on this luxurious two-bedroom apartment near Burj Khalifa and Dubai Mall, kindly reach out to us. Elevate your urban living experience with this upscale residence.

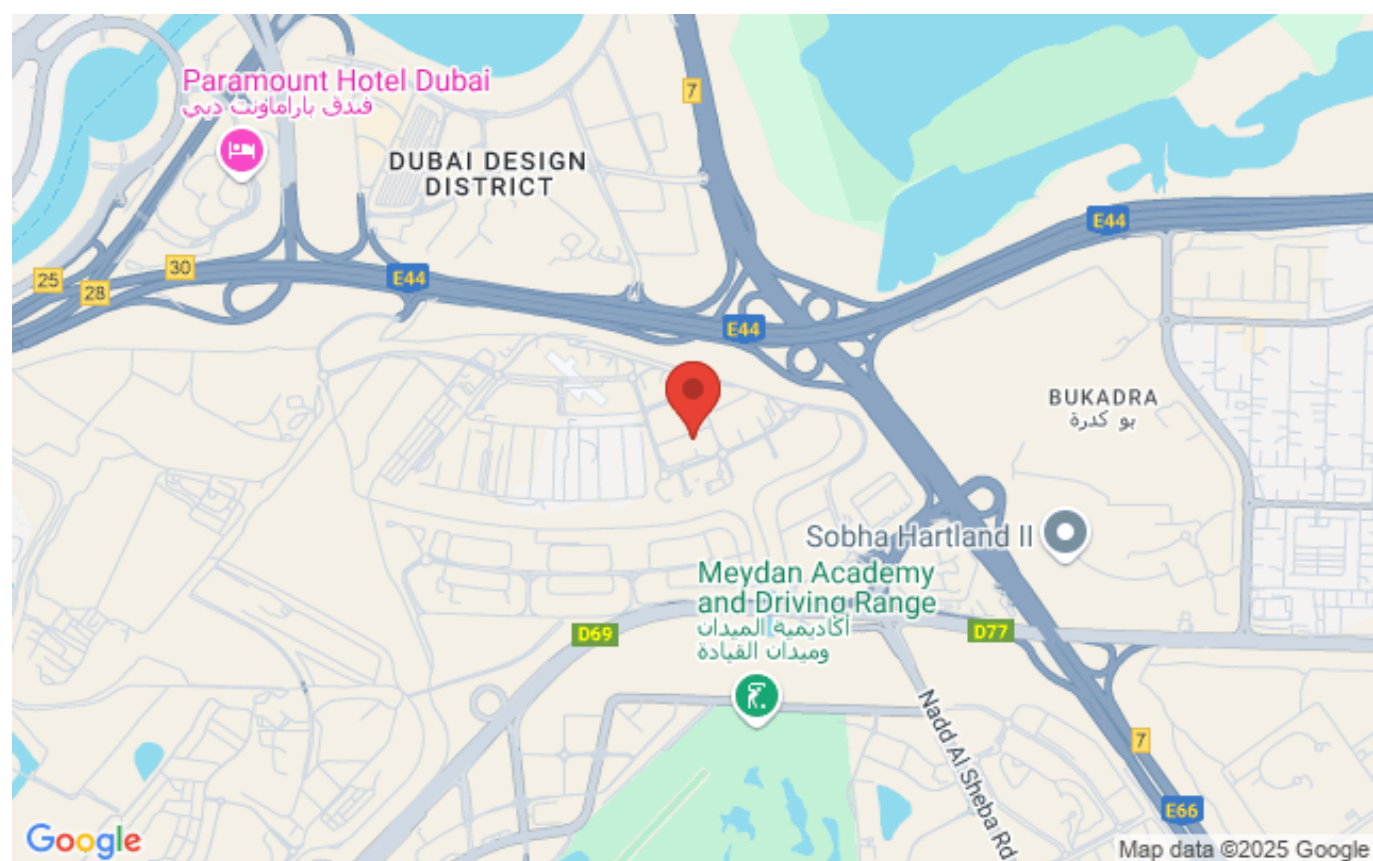
Note: This apartment strictly adheres to a non-smoking policy, with penalties for smoking incurring a fee of AED 900.

AMENITIES

- | | | |
|----------------------------|------------------------------|------------------------|
| ✓ Balcony | ✓ Cable-ready | ✓ Built in wardrobes |
| ✓ Central air conditioning | ✓ Covered parking | ✓ Fully fitted kitchen |
| ✓ Kitchen Appliances | ✓ On high floor | ✓ Shared swimming pool |
| ✓ Sea/Water view | ✓ Security | ✓ Maintenance |
| ✓ Basement | ✓ Community view | ✓ City view |
| ✓ Near school | ✓ Near mosque | ✓ Near supermarket |
| ✓ Near mall | ✓ Near public transportation | ✓ Near metro |
| ✓ Near restaurants | ✓ Shared Gym | ✓ Walk-in Closet |
| ✓ View of Landmark | ✓ Children's Play Area | ✓ Lobby in Building |
-

PICTURES





NOTES